

Instructions for Authors

AUTHORSHIP POLICY

Authorship should incorporate and should be restricted to those who have contributed substantially to the work in one or more of the following categories:

- Conceived of or designed study
- Performed research
- Analyzed data
- Contributed new methods or models
- Wrote the paper

TYPES OF PAPERS

Original Articles

Original Articles should present novel and original data as result of an independent, cohesive study.

The manuscripts have to be structured to contain a structured Abstract, List of authors with affiliations, Keywords (5) describing the content, Introduction, Material and Methods , Results, Discussion, Statement of author contributions, Acknowledgements, Legends to Figures and Tables, References.

Manuscripts can be any length. There are no restrictions on word count, number of figures, or amount of supporting information. We encourage you to present and discuss your findings concisely.

Short Communications

Short Communications should present brief observations which do not warrant the length of a full paper. However, they have to present completed studies and to follow the same scientific standards as Original Articles.

The manuscripts have to be structured to contain a structured Abstract, List of authors with affiliations, Keywords (5) describing the content. The text of a short communication is written without sections and without extra spacing between paragraphs. The length of such submissions is limited to 1500 words for short communication and 2000-3500 words for research note.

Comments

Comments on published papers and replies. Limited to 2500 characters.

Reviews

Mini-Review article are limited to 3000 words with two figures and two tables.

Full Review article are limited to 5000 words with no limitations on figures and tables and a maximum of 150 references.

NOMENCLATURE

The authors should follow the international rules of nomenclature in the names of organisms they describe. Recommendations of the International Code of Zoological Nomenclature, London 1999 should be strictly adhered to.

MANUSCRIPT SUBMISSION

Manuscript Submission

Submission of a manuscript implies: that the work described has not been published before; that it is not under consideration for publication anywhere else; that its publication has been approved by all co-authors, if any, as well as by the responsible authorities – tacitly or explicitly – at the institute where the work has been carried out. The publisher will not be held legally responsible should there be any claims for compensation.

Permissions

Authors wishing to include figures, tables, or text passages that have already been published elsewhere are required to obtain permission from the copyright owner(s) for both the print and online format and to include evidence that such permission has been granted when submitting their papers. Any material received without such evidence will be assumed to originate from the authors.

Online Submission

Please follow the hyperlink "Submit online" on the right and upload all of your manuscript files following the instructions given on the screen.

Please note:

Manuscripts should be submitted in correct English checked by a native English-speaking biologist/parasitologist. Authors are responsible for the linguistic accuracy of their papers. Authors should clearly confirm that their manuscript submitted to this journal was neither send to another journal nor any part of it has been published or is being considered for publication elsewhere in any form. The manuscript should contain: the title (as concise and informative as possible); name(s), the affiliation(s) and address(es) of the author(s); corresponding author e-mail address, telephone and fax numbers of the corresponding author; running title; abstract (preferably not exceeding 200–250 words) and keywords.

Papers should be typed in English with double-spacing, and wide margins including a left-hand margin of not less than 2.5 cm. The text should be composed of the Abstract in structural form (2-3 sentences from each section listed), Introduction, Materials and Methods, Results, Discussion and Conclusions provided with Acknowledgements if any, References, Tables and Figures. No part of the manuscript should be typed in capitals. Please use no more than three levels of displayed headings.

Latin terms, including genus and species names should be written in italics. Only the generally accepted abbreviations and symbols are allowed. Abbreviations should be defined at first mention and used consistently thereafter. The description of new species should be supported, if possible, by results obtained by means of molecular analysis. Contributors of taxonomic studies are encouraged to use molecular analysis where this is appropriate and feasible. The text must also have line numbers to make it easier for reviewers making reviews. Each page of the manuscript must include continuous line numbers in the margin.

Before submission of the manuscript Authors should log in/register on Editorial Manager and then upload their manuscripts along with a cover letter. Authors should follow the step-by-step instructions. In case of any problems please contact directly to the Editorial Office actapar@twarda.pan.pl

Authors are asked to suggest at least three potential referees who are experts in the field and are not associated with any of the authors, including their addresses, e-mail addresses and, if possible, telephone and fax numbers.

TITLE PAGE

Title Page

The title page should include:

- ⌘ The name(s) of the author(s)
- ⌘ A concise and informative title
- ⌘ The affiliation(s) and address(es) of the author(s)
- ⌘ The e-mail address, and telephone number(s) of the corresponding author
- ⌘ If available, the 16-digit ORCID of the author(s)

Abstract

Please provide a structured abstract of 150 to 250 words which should be divided into the following sections:

- Purpose (stating the main purposes and research question)
- Methods
- Results
- Conclusions

Keywords

Please provide 4 to 6 keywords which can be used for indexing purposes.

TEXT

Text Formatting

Manuscripts should be submitted in Word.

- ⌘ Use a normal, plain font (e.g., 10-point Times Roman) for text.
- ⌘ Use italics for emphasis.
- ⌘ Use the automatic page numbering function to number the pages.
- ⌘ Do not use field functions.
- ⌘ Use tab stops or other commands for indents, not the space bar.

- ⌘ Use the table function, not spreadsheets, to make tables.
- ⌘ Use the equation editor or MathType for equations.
- ⌘ Save your file in docx format (Word 2007 or higher) or doc format (older Word versions).

Manuscripts with mathematical content can also be submitted in LaTeX.

LaTeX macro package (zip, 182 kB)

Headings

Please use no more than three levels of displayed headings.

Abbreviations

Abbreviations should be defined at first mention and used consistently thereafter.

Footnotes

Footnotes can be used to give additional information, which may include the citation of a reference included in the reference list. They should not consist solely of a reference citation, and they should never include the bibliographic details of a reference. They should also not contain any figures or tables.

Footnotes to the text are numbered consecutively; those to tables should be indicated by superscript lower-case letters (or asterisks for significance values and other statistical data).

Footnotes to the title or the authors of the article are not given reference symbols.

Always use footnotes instead of endnotes.

Acknowledgments

Acknowledgments of people, grants, funds, etc. should be placed in a separate section on the title page. The names of funding organizations should be written in full.

REFERENCES

Citation

Cite references in the text by name and year in parentheses. Some examples:

Negotiation research spans many disciplines (Thompson 1990).

This result was later contradicted by Becker and Seligman (1996).

This effect has been widely studied (Abbott 1991; Barakat et al. 1995a, b; Kelso and Smith 1998; Medvec et al. 1999, 2000).

Reference list

The list of references should only include works that are cited in the text and that have been published or accepted for publication. Personal communications and unpublished works should only be mentioned in the text. Do not use footnotes or endnotes as a substitute for a reference list.

Reference list entries should be alphabetized by the last names of the first author of each work.

Order multi-author publications of the same first author alphabetically with respect to second, third, etc. author. Publications of exactly the same author(s) must be ordered chronologically.

⌘ Journal article

Gamelin FX, Baquet G, Berthoin S, Thevenet D, Nourry C, Nottin S, Bosquet L (2009) Effect of high intensity intermittent training on heart rate variability in prepubescent children. *Eur J Appl Physiol* 105:731-738.
<https://doi.org/10.1007/s00421-008-0955-8>

Ideally, the names of all authors should be provided, but the usage of “et al” in long author lists will also be accepted:

Smith J, Jones M Jr, Houghton L et al (1999) Future of health insurance. *N Engl J Med* 341:325–329

⌘ Article by DOI

Slifka MK, Whitton JL (2000) Clinical implications of dysregulated cytokine production. *J Mol Med*. <https://doi.org/10.1007/s001090000086>

⌘ Book

South J, Blass B (2001) *The future of modern genomics*. Blackwell, London

⌘ Book chapter

Brown B, Aaron M (2001) The politics of nature. In: Smith J (ed) *The rise of modern genomics*, 3rd edn. Wiley, New York, pp 230-257

⌘ Online document

Cartwright J (2007) Big stars have weather too. IOP Publishing PhysicsWeb. <http://physicsweb.org/articles/news/11/6/16/1>. Accessed 26 June 2007

⌘ Dissertation

Trent JW (1975) *Experimental acute renal failure*. Dissertation, University of California

Always use the standard abbreviation of a journal's name according to the ISSN List of Title Word Abbreviations, see

ISSN LTWA

If you are unsure, please use the full journal title.

For authors using EndNote, Springer provides an output style that supports the formatting of in-text citations and reference list.

EndNote style (zip, 2 kB)

TABLES

- ⌘ All tables are to be numbered using Arabic numerals.
- ⌘ Tables should always be cited in text in consecutive numerical order.
- ⌘ For each table, please supply a table caption (title) explaining the components of the table.
- ⌘ Identify any previously published material by giving the original source in the form of a reference at the end of the table caption.
- ⌘ Footnotes to tables should be indicated by superscript lower-case letters (or asterisks for significance values and other statistical data) and included beneath the table body.

ARTWORK

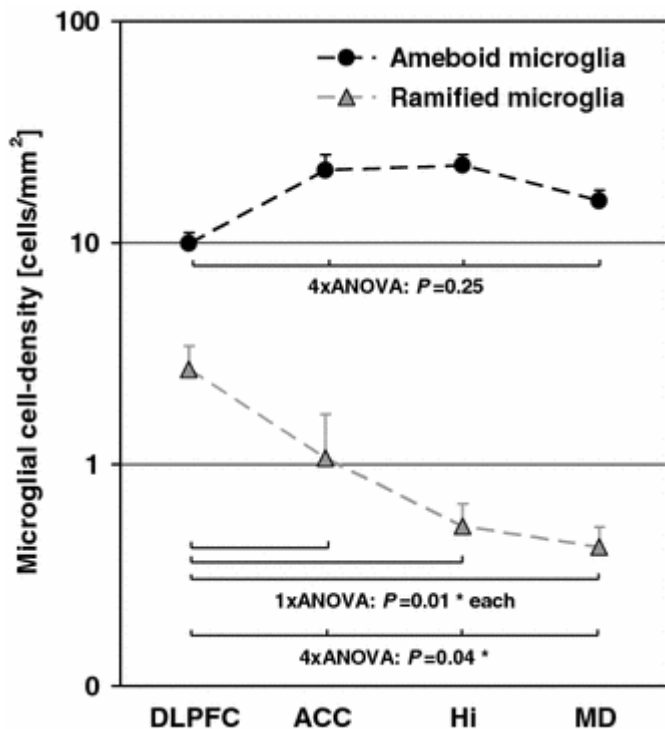
For the best quality final product, it is highly recommended that you submit all of your artwork – photographs, line drawings, etc. – in an electronic format. Your art will then be produced to the highest standards with the greatest accuracy to detail. The published work will directly reflect the quality of the artwork provided.

Electronic Figure Submission

- ⌘ Supply all figures electronically.
- ⌘ Indicate what graphics program was used to create the artwork.
- ⌘ For vector graphics, the preferred format is EPS; for halftones, please use TIFF format. MS Office files are also acceptable.
- ⌘ Vector graphics containing fonts must have the fonts embedded in the files.

⌘ Name your figure files with "Fig" and the figure number, e.g., Fig1.eps.

Line Art



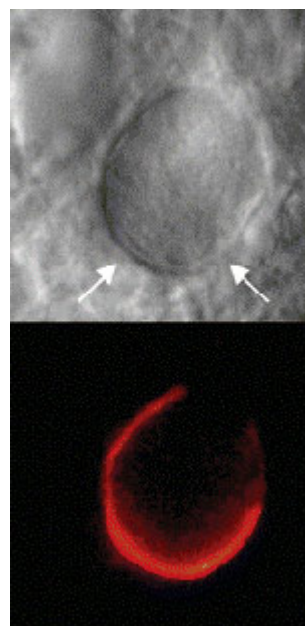
- ⌘ Definition: Black and white graphic with no shading.
- ⌘ Do not use faint lines and/or lettering and check that all lines and lettering within the figures are legible at final size.
- ⌘ All lines should be at least 0.1 mm (0.3 pt) wide.
- ⌘ Scanned line drawings and line drawings in bitmap format should have a minimum resolution of 1200 dpi.
- ⌘ Vector graphics containing fonts must have the fonts embedded in the files.

Halftone Art

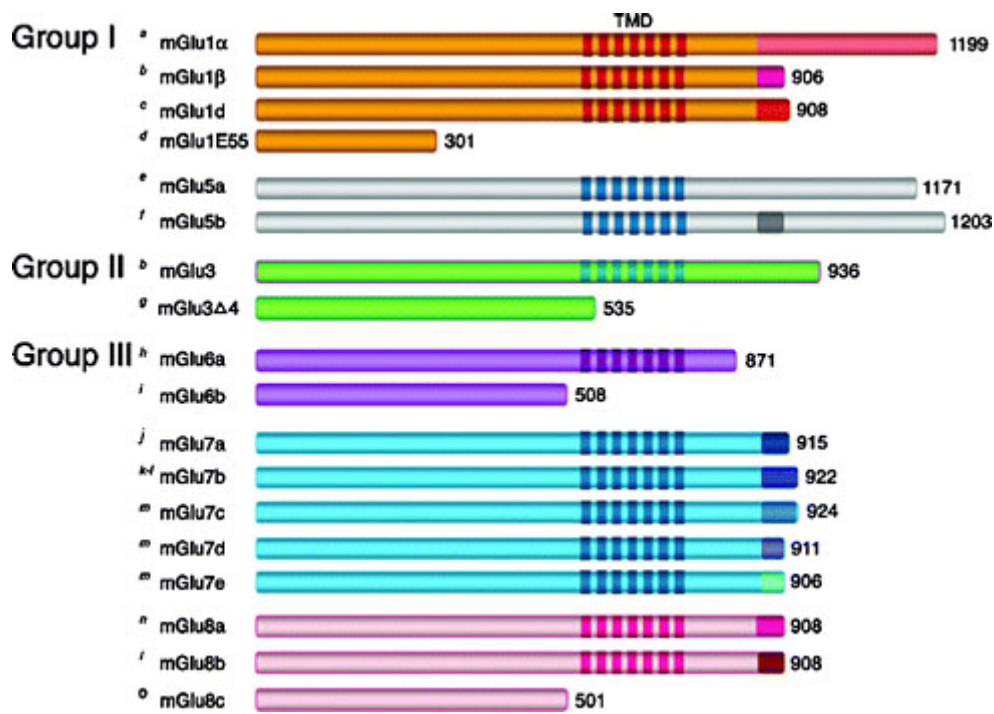
Definition: Photographs, drawings, or paintings with fine shading, etc.

If any magnification is used in the photographs, indicate this by using scale bars within the figures themselves.

Halftones should have a minimum resolution of 300 dpi.



Combination Art



Definition: a combination of halftone and line art, e.g., halftones containing line drawing, extensive lettering, color diagrams, etc.

Combination artwork should have a minimum resolution of 600 dpi.

Color Art

Color art is free of charge for print and online publication.

Color illustrations should be submitted as RGB.

Figure Lettering

- ⌘ To add lettering, it is best to use Helvetica or Arial (sans serif fonts).
- ⌘ Keep lettering consistently sized throughout your final-sized artwork, usually about 2–3 mm (8–12 pt).
- ⌘ Variance of type size within an illustration should be minimal, e.g., do not use 8-pt type on an axis and 20-pt type for the axis label.
- ⌘ Avoid effects such as shading, outline letters, etc.
- ⌘ Do not include titles or captions within your illustrations.

Figure Numbering

All figures are to be numbered using Arabic numerals.

Figures should always be cited in text in consecutive numerical order.

Figure parts should be denoted by lowercase letters (a, b, c, etc.).

If an appendix appears in your article and it contains one or more figures, continue the consecutive numbering of the main text. Do not number the appendix figures, "A1, A2, A3, etc." Figures in online appendices (Electronic Supplementary Material) should, however, be numbered separately.

Figure Captions

- ⌘ Each figure should have a concise caption describing accurately what the figure depicts. Include the captions in the text file of the manuscript, not in the figure file.
- ⌘ Figure captions begin with the term Fig. in bold type, followed by the figure number, also in bold type.
- ⌘ No punctuation is to be included after the number, nor is any punctuation to be placed at the end of the caption.

- ⌘ Identify all elements found in the figure in the figure caption; and use boxes, circles, etc., as coordinate points in graphs.
- ⌘ Identify previously published material by giving the original source in the form of a reference citation at the end of the figure caption.

Figure Placement and Size

When preparing your figures, size figures to fit in the column width.

For most journals the figures should be 39 mm, 84 mm, 129 mm, or 174 mm wide and not higher than 234 mm.

For books and book-sized journals, the figures should be 80 mm or 122 mm wide and not higher than 198 mm.

Permissions

If you include figures that have already been published elsewhere, you must obtain permission from the copyright owner(s) for both the print and online format. Please be aware that some publishers do not grant electronic rights for free and that Springer will not be able to refund any costs that may have occurred to receive these permissions. In such cases, material from other sources should be used.

Accessibility

In order to give people of all abilities and disabilities access to the content of your figures, please make sure that

All figures have descriptive captions (blind users could then use a text-to-speech software or a text-to-Braille hardware)

Patterns are used instead of or in addition to colors for conveying information (color-blind users would then be able to distinguish the visual elements)

Any figure lettering has a contrast ratio of at least 4.5:1

ELECTRONIC SUPPLEMENTARY MATERIAL

Springer accepts electronic multimedia files (animations, movies, audio, etc.) and other supplementary files to be published online along with an article or a book chapter. This feature can add dimension to the author's article, as certain information cannot be printed or is more convenient in electronic form.

Before submitting research datasets as electronic supplementary material, authors should read the journal's Research data policy. We encourage research data to be archived in data repositories wherever possible.

Submission

Supply all supplementary material in standard file formats.

Please include in each file the following information: article title, journal name, author names; affiliation and e-mail address of the corresponding author.

To accommodate user downloads, please keep in mind that larger-sized files may require very long download times and that some users may experience other problems during downloading.

Audio, Video, and Animations

Aspect ratio: 16:9 or 4:3

Maximum file size: 25 GB

Minimum video duration: 1 sec

Supported file formats: avi, wmv, mp4, mov, m2p, mp2, mpg, mpeg, flv, mxf, mts, m4v, 3gp

Text and Presentations

Submit your material in PDF format; .doc or .ppt files are not suitable for long-term viability.

A collection of figures may also be combined in a PDF file.

Spreadsheets

Spreadsheets should be submitted as .csv or .xlsx files (MS Excel).

Specialized Formats

Specialized format such as .pdb (chemical), .wrl (VRML), .nb (Mathematica notebook), and .tex can also be supplied.

Collecting Multiple Files

It is possible to collect multiple files in a .zip or .gz file.

Numbering

If supplying any supplementary material, the text must make specific mention of the material as a citation, similar to that of figures and tables.

Refer to the supplementary files as "Online Resource", e.g., "... as shown in the animation (Online Resource 3)", "... additional data are given in Online Resource 4".

Name the files consecutively, e.g. "ESM_3.mpg", "ESM_4.pdf".

Captions

For each supplementary material, please supply a concise caption describing the content of the file.

Processing of supplementary files

Electronic supplementary material will be published as received from the author without any conversion, editing, or reformatting.

Accessibility

In order to give people of all abilities and disabilities access to the content of your supplementary files, please make sure that

The manuscript contains a descriptive caption for each supplementary material

Video files do not contain anything that flashes more than three times per second (so that users prone to seizures caused by such effects are not put at risk)

AFTER ACCEPTANCE

Upon acceptance of your article you will receive a link to the special Author Query Application at Springer's web page where you can sign the Copyright Transfer Statement online and indicate whether you wish to order OpenChoice and offprints.

Once the Author Query Application has been completed, your article will be processed and you will receive the proofs.

Copyright transfer

Authors will be asked to transfer copyright of the article to the Publisher (or grant the Publisher exclusive publication and dissemination rights). This will ensure the widest possible protection and dissemination of information under copyright laws.

Offprints

Offprints can be ordered by the corresponding author.

[Color illustrations](#)

Publication of color illustrations is free of charge.

[Proof reading](#)

The purpose of the proof is to check for typesetting or conversion errors and the completeness and accuracy of the text, tables and figures. Substantial changes in content, e.g., new results, corrected values, title and authorship, are not allowed without the approval of the Editor.

After online publication, further changes can only be made in the form of an Erratum, which will be hyperlinked to the article.

[Online First](#)

The article will be published online after receipt of the corrected proofs. This is the official first publication citable with the DOI. After release of the printed version, the paper can also be cited by issue and page numbers.

RESEARCH DATA POLICY

A submission to the journal implies that materials described in the manuscript, including all relevant raw data, will be freely available to any researcher wishing to use them for non-commercial purposes, without breaching participant confidentiality.

The journal strongly encourages that all datasets on which the conclusions of the paper rely should be available to readers. We encourage authors to ensure that their datasets are either deposited in publicly available repositories (where available and appropriate) or presented in the main manuscript or additional supporting files whenever possible. Please see Springer Nature's information on recommended repositories.

[List of Repositories](#)

[Research Data Policy](#)

General repositories - for all types of research data - such as figshare and Dryad may be used where appropriate.

Datasets that are assigned digital object identifiers (DOIs) by a data repository may be cited in the reference list. Data citations should include the minimum information recommended by DataCite: authors, title, publisher (repository name), identifier.

[DataCite](#)

Where a widely established research community expectation for data archiving in public repositories exists, submission to a community-endorsed, public repository is mandatory. Persistent identifiers (such as DOIs and accession numbers) for relevant datasets must be provided in the paper.

For more information:

[Research Data Policy Frequently Asked Questions](#)

[Data availability](#)

The journal encourages authors to provide a statement of Data availability in their article. Data availability statements should include information on where data supporting the results reported in the article can be found, including, where applicable, hyperlinks to publicly archived datasets analysed or generated during the study. Data availability statements can also indicate whether data are available on request from the authors and where no data are available, if appropriate.

Data Availability statements can take one of the following forms (or a combination of more than one if required for multiple datasets):

1. The datasets generated during and/or analysed during the current study are available in the [NAME] repository, [PERSISTENT WEB LINK TO DATASETS]
2. The datasets generated during and/or analysed during the current study are not publicly available due [REASON WHY DATA ARE NOT PUBLIC] but are available from the corresponding author on reasonable request.
3. The datasets generated during and/or analysed during the current study are available from the corresponding author on reasonable request.
4. Data sharing not applicable to this article as no datasets were generated or analysed during the current study
5. All data generated or analysed during this study are included in this published article [and its supplementary information files].

More examples of template data availability statements, which include examples of openly available and restricted access datasets, are available:

Data availability statements

Springer Nature provides a research data policy support service for authors and editors, which can be contacted at researchdata@springernature.com.

This service provides advice on research data policy compliance and on finding research data repositories. It is independent of journal, book and conference proceedings editorial offices and does not advise on specific manuscripts.

Helpdesk

SCIENTIFIC STYLE

Genus and species names should be in italics.

ETHICAL RESPONSIBILITIES OF AUTHORS

This journal is committed to upholding the integrity of the scientific record. As a member of the Committee on Publication Ethics (COPE) the journal will follow the COPE guidelines on how to deal with potential acts of misconduct.

Authors should refrain from misrepresenting research results which could damage the trust in the journal, the professionalism of scientific authorship, and ultimately the entire scientific endeavour. Maintaining integrity of the research and its presentation can be achieved by following the rules of good scientific practice, which include:

- ⌘ The manuscript has not been submitted to more than one journal for simultaneous consideration.
- ⌘ The manuscript has not been published previously (partly or in full), unless the new work concerns an expansion of previous work (please provide transparency on the re-use of material to avoid the hint of text-recycling (“self-plagiarism”).
- ⌘ A single study is not split up into several parts to increase the quantity of submissions and submitted to various journals or to one journal over time (e.g. “salami-publishing”).
- ⌘ No data have been fabricated or manipulated (including images) to support your conclusions
- ⌘ No data, text, or theories by others are presented as if they were the author’s own (“plagiarism”). Proper acknowledgements to other works must be given (this includes material that is closely copied (near verbatim), summarized and/or paraphrased), quotation marks are used for verbatim copying of material, and permissions are secured for material that is copyrighted.

Important note: the journal may use software to screen for plagiarism.

- ⌘ Consent to submit has been received explicitly from all co-authors, as well as from the responsible authorities - tacitly or explicitly - at the institute/organization where the work has been carried out, **before** the work is submitted.
- ⌘ Authors whose names appear on the submission have contributed sufficiently to the scientific work and therefore share collective responsibility and accountability for the results.
- ⌘ Authors are strongly advised to ensure the correct author group, corresponding author, and order of authors at submission. Changes of authorship or in the order of authors are **not** accepted **after** acceptance of a manuscript.
- ⌘ Adding and/or deleting authors and/or changing the order of authors **at revision stage** may be justifiably warranted. A letter must accompany the revised manuscript to explain the reason for the change(s) and the contribution role(s) of the added and/or deleted author(s). Further documentation may be required to support your request.
- ⌘ Requests for addition or removal of authors as a result of authorship disputes after acceptance are honored after formal notification by the institute or independent body and/or when there is agreement between all authors.
- ⌘ Upon request authors should be prepared to send relevant documentation or data in order to verify the validity of the results. This could be in the form of raw data, samples, records, etc. Sensitive information in the form of confidential proprietary data is excluded.

If there is a suspicion of misconduct, the journal will carry out an investigation following the COPE guidelines. If, after investigation, the allegation seems to raise valid concerns, the accused author will be contacted and given an opportunity to address the issue. If misconduct has been established beyond reasonable doubt, this may result in the Editor-in-Chief's implementation of the following measures, including, but not limited to:

If the article is still under consideration, it may be rejected and returned to the author. If the article has already been published online, depending on the nature and severity of the infraction, either an erratum will be placed with the article or in severe cases complete retraction of the article will occur. The reason must be given in the published erratum or retraction note. Please note that retraction means that the paper is **maintained on the platform**, watermarked "retracted" and explanation for the retraction is provided in a note linked to the watermarked article. The author's institution may be informed.

COMPLIANCE WITH ETHICAL STANDARDS

To ensure objectivity and transparency in research and to ensure that accepted principles of ethical and professional conduct have been followed, authors should include information regarding sources of funding, potential conflicts of interest (financial or non-financial), informed consent if the research involved human participants, and a statement on welfare of animals if the research involved animals.

Authors should include the following statements (if applicable) in a separate section entitled "Compliance with Ethical Standards" when submitting a paper:

Disclosure of potential conflicts of interest
 Research involving Human Participants and/or Animals
 Informed consent

Please note that standards could vary slightly per journal dependent on their peer review policies (i.e. single or double blind peer review) as well as per journal subject discipline. Before submitting your article check the instructions following this section carefully.

The corresponding author should be prepared to collect documentation of compliance with ethical standards and send if requested during peer review or after publication.

The Editors reserve the right to reject manuscripts that do not comply with the above-mentioned guidelines. The author will be held responsible for false statements or failure to fulfill the above-

mentioned guidelines.

DISCLOSURE OF POTENTIAL CONFLICTS OF INTEREST

Authors must disclose all relationships or interests that could have direct or potential influence or impart bias on the work. Although an author may not feel there is any conflict, disclosure of relationships and interests provides a more complete and transparent process, leading to an accurate and objective assessment of the work. Awareness of a real or perceived conflicts of interest is a perspective to which the readers are entitled. This is not meant to imply that a financial relationship with an organization that sponsored the research or compensation received for consultancy work is inappropriate. Examples of potential conflicts of interests **that are directly or indirectly related to the research** may include but are not limited to the following:

- ⌘ Research grants from funding agencies (please give the research funder and the grant number)
- ⌘ Honoraria for speaking at symposia
- ⌘ Financial support for attending symposia
- ⌘ Financial support for educational programs
- ⌘ Employment or consultation
- ⌘ Support from a project sponsor
- ⌘ Position on advisory board or board of directors or other type of management relationships
- ⌘ Multiple affiliations
- ⌘ Financial relationships, for example equity ownership or investment interest
- ⌘ Intellectual property rights (e.g. patents, copyrights and royalties from such rights)
- ⌘ Holdings of spouse and/or children that may have financial interest in the work

In addition, interests that go beyond financial interests and compensation (non-financial interests) that may be important to readers should be disclosed. These may include but are not limited to personal relationships or competing interests directly or indirectly tied to this research, or professional interests or personal beliefs that may influence your research.

The corresponding author collects the conflict of interest disclosure forms from all authors. In author collaborations where formal agreements for representation allow it, it is sufficient for the corresponding author to sign the disclosure form on behalf of all authors. Examples of forms can be found

here:

The corresponding author will include a summary statement in the text of the manuscript in a separate section before the reference list, that reflects what is recorded in the potential conflict of interest disclosure form(s).

See below examples of disclosures:

Funding: This study was funded by X (grant number X).

Conflict of Interest: Author A has received research grants from Company A. Author B has received a speaker honorarium from Company X and owns stock in Company Y. Author C is a member of committee Z.

If no conflict exists, the authors should state:

Conflict of Interest: The authors declare that they have no conflict of interest.

RESEARCH INVOLVING HUMAN PARTICIPANTS AND/OR ANIMALS

1) Statement of human rights

When reporting studies that involve human participants, authors should include a statement that the studies have been approved by the appropriate institutional and/or national research ethics committee and have been performed in accordance with the ethical standards as laid down in the 1964 Declaration of Helsinki and its later amendments or comparable ethical standards.

If doubt exists whether the research was conducted in accordance with the 1964 Helsinki Declaration or comparable standards, the authors must explain the reasons for their approach, and demonstrate that the independent ethics committee or institutional review board explicitly approved the doubtful aspects of the study.

The following statements should be included in the text before the References section:

Ethical approval: “All procedures performed in studies involving human participants were in accordance with the ethical standards of the institutional and/or national research committee and with the 1964 Helsinki declaration and its later amendments or comparable ethical standards.”

Ethical approval retrospective studies

Although retrospective studies are conducted on already available data or biological material (for which formal consent may not be needed or is difficult to obtain) ethical approval may be required dependent on the law and the national ethical guidelines of a country. Authors should check with their institution to make sure they are complying with the specific requirements of their country.

2) Statement on the welfare of animals

The welfare of animals used for research must be respected. When reporting experiments on animals, authors should indicate whether the international, national, and/or institutional guidelines for the care and use of animals have been followed, and that the studies have been approved by a research ethics committee at the institution or practice at which the studies were conducted (where such a committee exists).

For studies with animals, the following statement should be included in the text before the References section:

Ethical approval: “All applicable international, national, and/or institutional guidelines for the care and use of animals were followed.”

If applicable (where such a committee exists): “All procedures performed in studies involving animals were in accordance with the ethical standards of the institution or practice at which the studies were conducted.”

If articles do not contain studies with human participants or animals by any of the authors, please select one of the following statements:

“This article does not contain any studies with human participants performed by any of the authors.”

“This article does not contain any studies with animals performed by any of the authors.”

“This article does not contain any studies with human participants or animals performed by any of the authors.”

INFORMED CONSENT

All individuals have individual rights that are not to be infringed. Individual participants in studies have, for example, the right to decide what happens to the (identifiable) personal data gathered, to what they have said during a study or an interview, as well as to any photograph that was taken. Hence it is important that all participants gave their informed consent in writing prior to inclusion in the study. Identifying details (names, dates of birth, identity numbers and other information) of the participants that were studied should not be published in written descriptions, photographs, and genetic profiles unless the information is essential for scientific purposes and the participant (or parent or guardian if the participant is incapable) gave written informed consent for publication. Complete anonymity is difficult to achieve in some cases, and informed consent should be obtained if there is any doubt. For example, masking the eye region in photographs of participants is inadequate protection of anonymity. If identifying characteristics

are altered to protect anonymity, such as in genetic profiles, authors should provide assurance that alterations do not distort scientific meaning.

The following statement should be included:

Informed consent: “Informed consent was obtained from all individual participants included in the study.”

If identifying information about participants is available in the article, the following statement should be included:

“Additional informed consent was obtained from all individual participants for whom identifying information is included in this article.”

ENGLISH LANGUAGE SUPPORT

For editors and reviewers to accurately assess the work presented in your manuscript you need to ensure the English language is of sufficient quality to be understood. If you need help with writing in English you should consider:

Asking a colleague who is a native English speaker to review your manuscript for clarity.

Visiting the English language tutorial which covers the common mistakes when writing in English.

Using a professional language editing service where editors will improve the English to ensure that your meaning is clear and identify problems that require your review.

Two such services are provided by our affiliates Nature Research Editing Service and American Journal Experts. Springer authors are entitled to a 10% discount on their first submission to either of these services, simply follow the links below

English language tutorial

Nature Research Editing Service

American Journal Experts

Please note that the use of a language editing service is not a requirement for publication in this journal and does not imply or guarantee that the article will be selected for peer review or accepted.

If your manuscript is accepted it will be checked by our copyeditors for spelling and formal style before publication.